



**THE HYDRO**[®]
WINDERMERE

LAKE DISTRICT CONFERENCE CENTRE

Welcome to The Hydro



Have a Lake District conference requirement? ...we'd like to help

The Hydro has long been associated with the Conference and seminar market and has a suite of rooms suitable for most occasions from institutional to recreational.

Each Conference has the benefit of a dedicated manager to ensure our clients, and their delegates, receive the level and attention of service they require to ensure that their events are completed to the standard they require. Our staff have the flexibility to react quickly and positively to any last minute change of programme or alteration to schedule.

Our conference facilities can cater for meetings from 6 to 200 delegates.

The excellent position of the hotel, quietly situated overlooking the village of Bowness and Lake Windermere, makes the Hydro at Windermere a popular venue for conferences and meetings of all kinds.



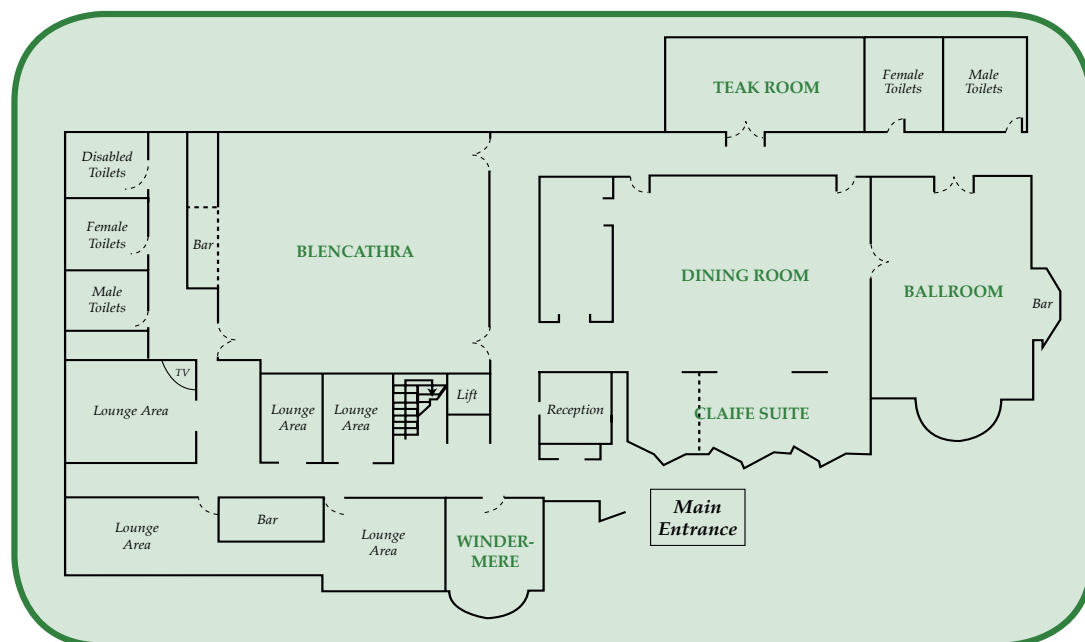
Conference & Function Rooms

With The Hydro Hotel there is a large choice of conference services. We are able to offer the facilities of the rooms shown below combined with a large selection of audio and visual equipment on site, including professional PA equipment and wireless internet access.

In addition, our professional team of banqueting staff all have the full aim of making your conference a success .

	Dining Room	Blencathra	Ballroom	Claife Suite	Teak Room	Windermere Room
Dimensions						
Length ft/m	49' (14.9)	39'10" (12.03)	37' (11.3)	48' (14.6)	44' (13.4)	16' (4.9)
Width ft/m	31' (9.5)	40'6" (12.34)	30' (9.1)	16' (4.9)	21' (6.4)	18' (5.5)
Area sq ft (sq.m)	1519 (141.5)	1620 (148.5)	1110 (102.8)	768 (71.5)	924 (85.8)	288 (26.9)
Height ft/m	12' 8" (3.9)	12' (3.66)	12' 6" (3.8)	10' 11" (3.1)	8' 6" (2.5)	10' 6" (3.2)
Capacities						
Theatre	250	200	150	80	60	30
Classroom	100	100	80	50	40	15
Boardroom	100	100	50	40	30	20
Lunch/Dinner	125	140	80	70	60	20
Dinner Dance	125	140	80			
Reception	250	180	100	100	60	30

General Plan

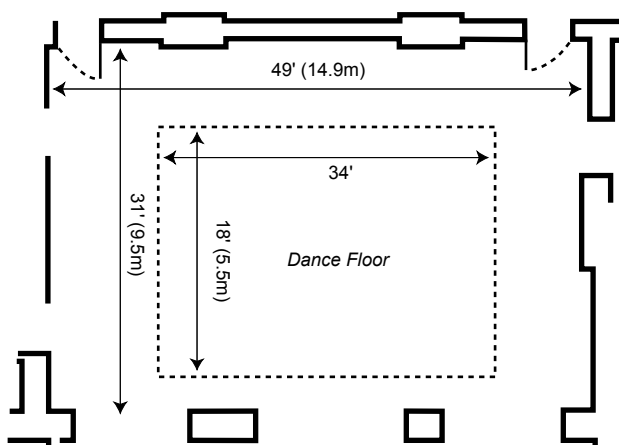


Conference & Function Rooms

Dining Room

An elegant high ceiling room with three large 1920s style chandeliers along the centre. The dining room has the benefit of the Claife suite on the western side through which natural light streams throughout the day. There are two large mirrors along the wall which help to enhance the light, bright and airy feel to the room.

Dimensions	
Length ft/m	49' (14.9)
Width ft/m	31' (9.5)
Area sq ft (sq.m)	1519 (141.5)
Height ft/m	12' 8" (3.9)
Capacities	
Theatre	250
Classroom	100
Boardroom	100
Lunch/Dinner	125
Dinner Dance	125
Reception	250



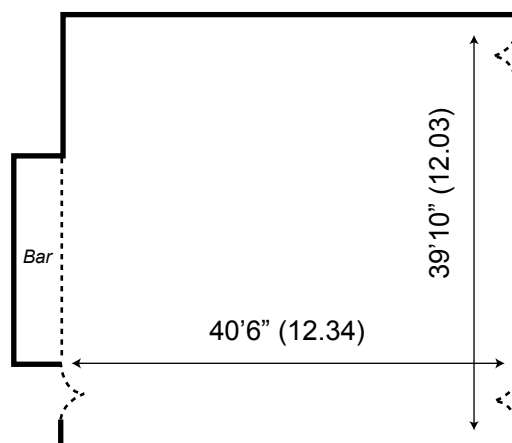
Dimensions	
Length ft/m	39'10" (12.03)
Width ft/m	40'6" (12.34)
Area sq ft (sq.m)	1620 (148.5)
Height ft/m	12' (3.66)
Capacities	
Theatre	200
Classroom	100
Boardroom	100
Lunch/Dinner	140
Dinner Dance	140
Reception	180

Blencathra

Our latest addition: the Blencathra suite is a large very high ceiling room with four skylights to provide natural light throughout the day but which can be blacked out if required.

There is a large projection screen available and a dedicated digital projector discreetly hung from the ceiling that gives an almost cinema like image on the screen.

The facilities of the room include wireless network access, PA system, dedicated PC, Cat 5 cable sockets, TV aerial connections and air conditioning. The Blencathra suite also has a completely portable dance floor so the room has the ability to suit a multitude of lay ups and formats.

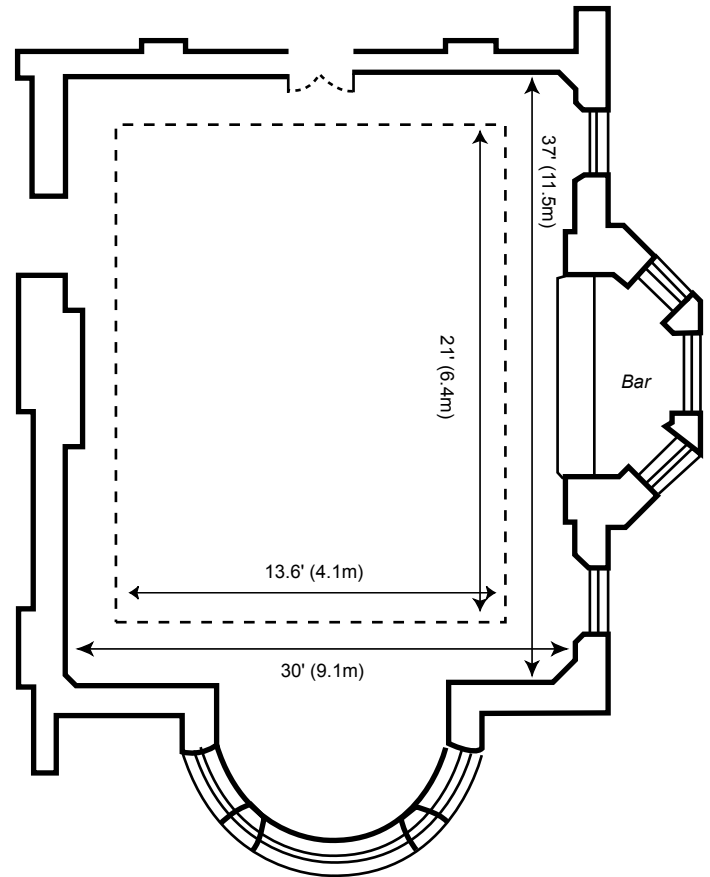


Conference & Function Rooms

Ballroom

An elegant high ceiling room with a large bay window, commanding fine views over the north basin of the Lake, providing plenty of natural light. Additional features include dimming lights, real fire in an imposing sandstone fireplace, dance floor and bar.

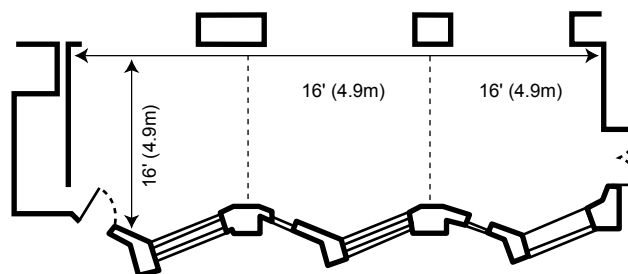
Dimensions	
Length ft/m	37' (11.3)
Width ft/m	30' (9.1)
Area sq ft (sq.m)	1110 (102.8)
Height ft/m	12' 6" (3.8)
Capacities	
Theatre	150
Classroom	80
Boardroom	50
Lunch/Dinner	80
Dinner Dance	80
Reception	100



Dimensions	
Length ft/m	48' (14.6)
Width ft/m	16' (4.9)
Area sq ft (sq.m)	768 (71.5)
Height ft/m	10' 11" (3.1)
Capacities	
Theatre	80
Classroom	50
Boardroom	40
Lunch/Dinner	70
Dinner Dance	
Reception	100

Claipe Suite

The Claipe suite is separated from the main dining room by three removable glass panels and doors and has a panoramic view over the front of the hotel. The three window sections are planted with palm fronds.

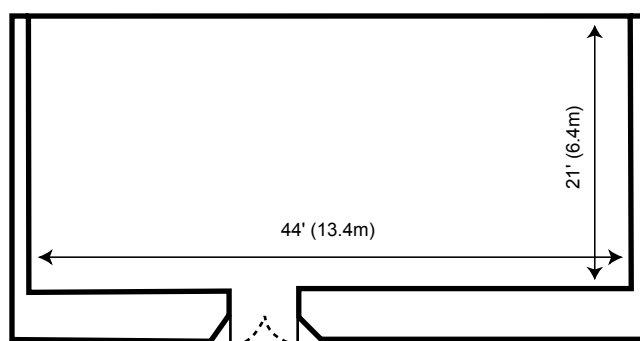


Conference & Function Rooms

Teak Room

Originally the cinema of the hotel the Teak room is lined with teak panels and lit electrically. It lends itself to small Boardroom style meetings or intimate private dinners where we use a block table and decorate it with candelabra, flower arrangements and a large fruit display.

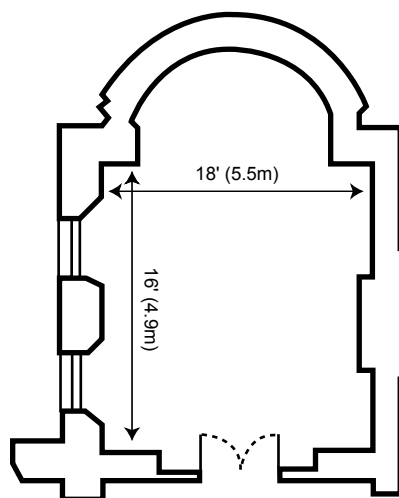
Dimensions	
Length ft/m	44' (13.4)
Width ft/m	21' (6.4)
Area sq ft (sq.m)	924 (85.8)
Height ft/m	8' 6" (2.5)
Capacities	
Theatre	60
Classroom	40
Boardroom	30
Lunch/Dinner	60
Dinner Dance	
Reception	60



Windermere Room

The Windermere, with a large bay window overlooking the Lake, is a light and airy room suitable for small meetings or use as a conference office if required.

Dimensions	
Length ft/m	16' (4.9)
Width ft/m	18' (5.5)
Area sq ft (sq.m)	288 (26.9)
Height ft/m	10' 6" (3.2)
Capacities	
Theatre	30
Classroom	15
Boardroom	20
Lunch/Dinner	20
Dinner Dance	
Reception	30





Conference Charter

Guaranteed Immediate Response to Enquiries

We guarantee to respond to all telephone enquiries within three hours. A written proposal, confirming availability and giving details of meeting rooms, dining areas, bedrooms and rates, will follow by fax or post within 24 hours, if required.

Guaranteed Prompt Message Delivery

The hotel guarantees that all messages, where the name of the delegate and the conference they are attending are clearly given, will be delivered within 15 minutes unless we receive instructions that the meeting is not to be disturbed.

Guaranteed Regular Conference Room Service

The hotel guarantees that meeting rooms will be sent iced water at every refreshment interval throughout the day.

Guaranteed Accurate Greeting Board

The hotel guarantees that the hotel welcome board will accurately reflect the clients greeting requirements and location.

Guaranteed Business Service

Fax, photocopying, Internet connection, conference calling and secretarial services are available at the hotel at an additional charge.

Guaranteed Named Contact

Before the event, the client will be able to meet the prime on-site hotel contact who will be responsible for looking after the event. Throughout the event there will always be a named contact on hand to assist the client as required. We guarantee a professional conference minder available 24 hours a day, 7 days a week.

Guaranteed Rooms Available

Rooms ready by 3.00 p.m.

Morning coffee and afternoon beverages will be delivered on time, as per the confirmed conference details.

The conference room will be laid to your specification as per the confirmed conference details.





Conference Packages

The Hydro operates a flexible pricing structure to assist meeting and conference planners.

The two main packages we offer are:

Day Delegate Rate

- Main Meeting Room Hire (0900 - 1700)
- Syndicate rooms (as available)
- House Audio visual equipment (as available)
- 1 Flipchart and stand with pens
- Fruit squash, iced water, mineral water and mints.
- Business box
- Note paper and pencils
- Morning coffee and biscuits
- Buffet Style Lunch
- Afternoon tea and biscuits
- Telephone with long lead

24 Hour Delegate Rate

- All of the features of the Day Delegate Rate
- Accommodation with full English Breakfast
- 3 Course Dinner with Coffee

Equipment

A range of audio visual equipment is available for hire and should be requested at the time of booking.

- Audio Visual Equipment
- Projection Screen
- Slide Projector
- Flip Chart Stand
- Blackboard and easel
- Amplification Equipment
- Internet Access

Additional Extras

- Portable Stage
- Lectern
- Large Screen T.V.
- V.H.S. video
- DVD Player
- Overhead Projector
- Morning Danish Pastries
- Cream Tea
- Choice of Newspapers for Delegates
- Additional Tea/Coffee

We can also offer a range of outdoor activities such as:

- Clay Pigeon Shooting • Sailing • Climbing



Banquetting

For all your banqueting needs The Hydro has a room that can cater for your requirements in comfort. Our smallest room holds 10 people, the largest 160 and in total we can cater for up to 500 people at any one time.

Our extensive banqueting menu lists some of the dishes we regularly prepare. This list is not exhaustive and if you have a particular theme, recipe or dish our talented Head Chef and kitchen brigade will be able to create it for you.

For more formal functions we have the services of one of the countries leading Toastmasters and a wide variety of after dinner entertainment can be arranged from Discos to ten piece bands, Ceiledh, comedians, speakers, magicians and jugglers.

Reception Nibbles - £5.00

- Canapés • Cocktail Sausage Rolls • Nuts & Crisps

Luncheon Fork Buffet - £14 .00

Hot dish of your choice and traditional accompaniment
Cooked Ham, Beef, Salmon and Chicken

Egg Mayonnaise, Assorted Quiches, Sausage rolls, assorted pastries and pickles
Seasonal leaves, Coleslaw, Potato, Waldorf, Rice, Tomato and cucumber salads
Hot Jacket Potatoes
Bread Rolls

Gateau , Fresh Fruit Salad , Cheese board
Fresh Fruit Basket

Working Lunch Buffet - £7.50

Home-made Soup of the Day, Hot Dish of the Day
Jacket Potatoes, Cheese Board

OR

Various Sandwiches, Home-made Soup, French Fries
Cheeseboard

Light Finger Buffet - £7.50

Fresh Sandwiches, Home-made Pizza slices, Vol au Vents, Cocktail Sausage
Rolls, Vegetarian Quiches, Cocktail Chipolatas in honey and almonds,
Chicken Drumsticks and Crudités

Celebration carved Buffet - £25.00

A starter of your choice

Followed by

Dressed Salmon, Chaud Froid Gammon, and Handsome Pigs' Head

Sliced Ham, Beef Topside, Turkey, Pork Loin, Chicken

Egg Mayonnaise, Assorted Quiches, Sausage rolls, assorted pastries and pickles

Seasonal leaves, Coleslaw, Potato, Waldorf, Rice, Tomato and cucumber salads

Hot Jacket Potatoes

Two hot dishes of your choice and traditional accompaniments

Bread Rolls

Assorted desserts comprising of Gateaux, Cheesecakes, Trifles, Profiteroles, Fresh Fruit Salad, Cheeseboard, Basket of fresh fruit

Tea or Coffee

Ideal for Weddings and other celebrations



Leisure Facilities

New in March 2004 The Hydro Spa based on our own site, offers swimming pool, Jacuzzi, sauna and mini gym. Our new heated indoor swimming pool has the latest in temperature and humidity control.

If golf is your game, there are challenging golf courses at Windermere, Keswick and Kendal, horse racing at Carlisle and Cartmel and game and course fishing in the many lakes and rivers around about.

How about a trip on Lake Windermere?

Hydrotherapy is a brand new 34 foot yacht built to ocean going Lloyd's classification and is a comfortable and safe way to enjoy the beauty and tranquility of the largest lake in the Lake District. Moored on Windermere she is equipped with all the comforts of home, ranging from microwave to central heating, and all the appropriate safety equipment to make your time aboard both safe and relaxing.

Hydrotherapy was invented by the Victorians to treat ailments by the application of water. Now 100 years on, aboard Hydrotherapy, we can help you achieve a new modern form of therapy in the 21st century.

Hydrotherapy is operated by The Hydro Hotel in Bowness-on-Windermere and can be used for a multitude of purposes ranging from a special family day out to a corporate meeting or promotion.

Hydrotherapy is chartered fully crewed by a fully licensed captain and crew who can provide you with an exhilarating time and excellent cuisine.





How to find us

- Junction 36, turn west on the A590 (dual carriageway). Continue for approx 7 miles until you reach a roundabout.
- Straight on at the roundabout onto the A591. Continue for approx 7 miles until you see "The Windermere Hotel" on your right.
- Turn left and continue through the village on the one way system.
- Leave the village and drive downhill for approx 1 mile, past the health centre and school on your right, and police station on your left.
- As you enter the village of Bowness you will see the cinema on your right and shops on the left.
- Approx 100 yards further down there is a left-hand turn between the 'Lakeland Shop' and 'Basketware Shop' - this is Helm Road.
- The Hydro Hotel is situated at the top of the hill on your left.

